



# State Transportation Board Meeting

May 21, 2026



- Invocation
- Pledge of Allegiance
- Roll Call
- Welcome Remarks
- Approval of Minutes





## Resolution Honoring Robert L. Brown, Jr.



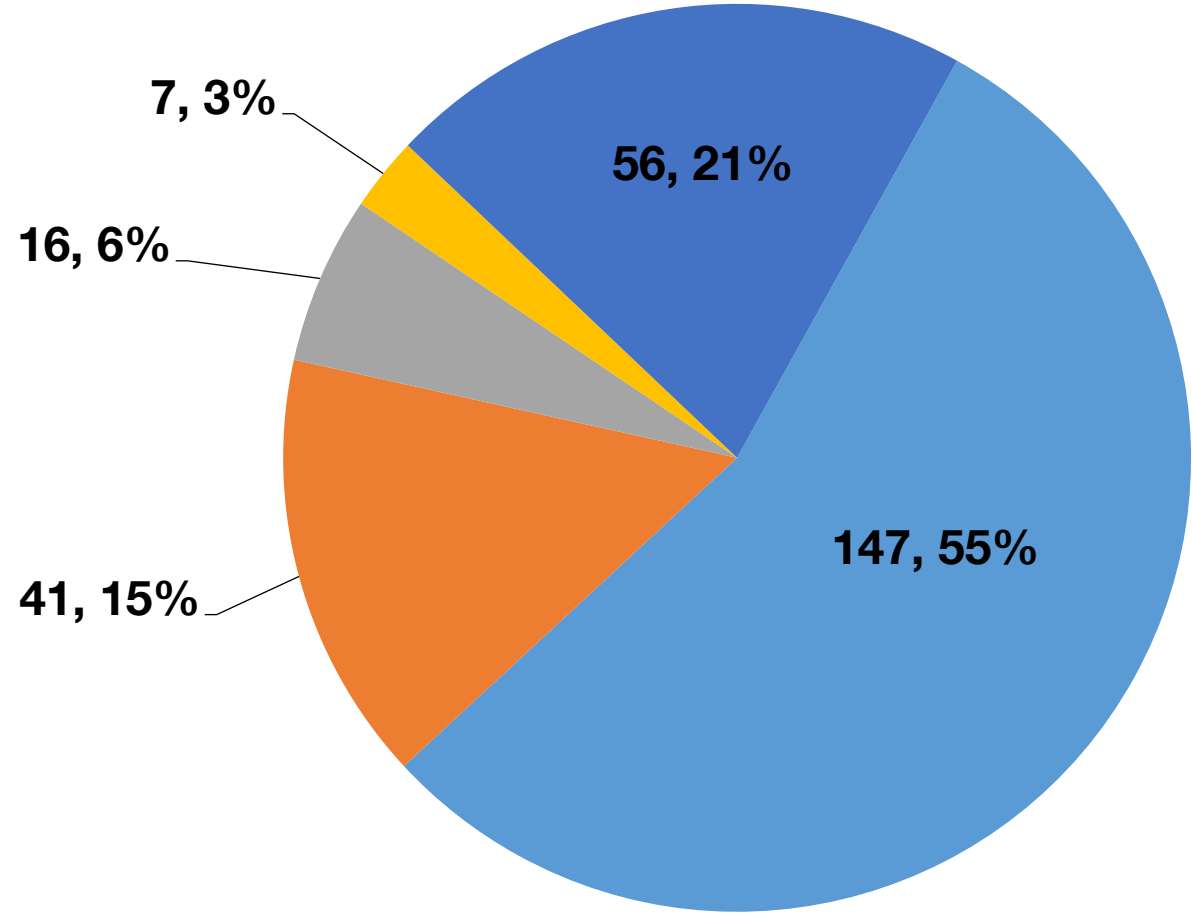


# June 2026 Letting Report

**Albert V. Shelby, III**  
**Director of Program Delivery**  
**May 21, 2026**



## Fiscal Year 2026 Letting Report Number of Projects Let in FY 2026 (Contractor Low Bid Award Data)



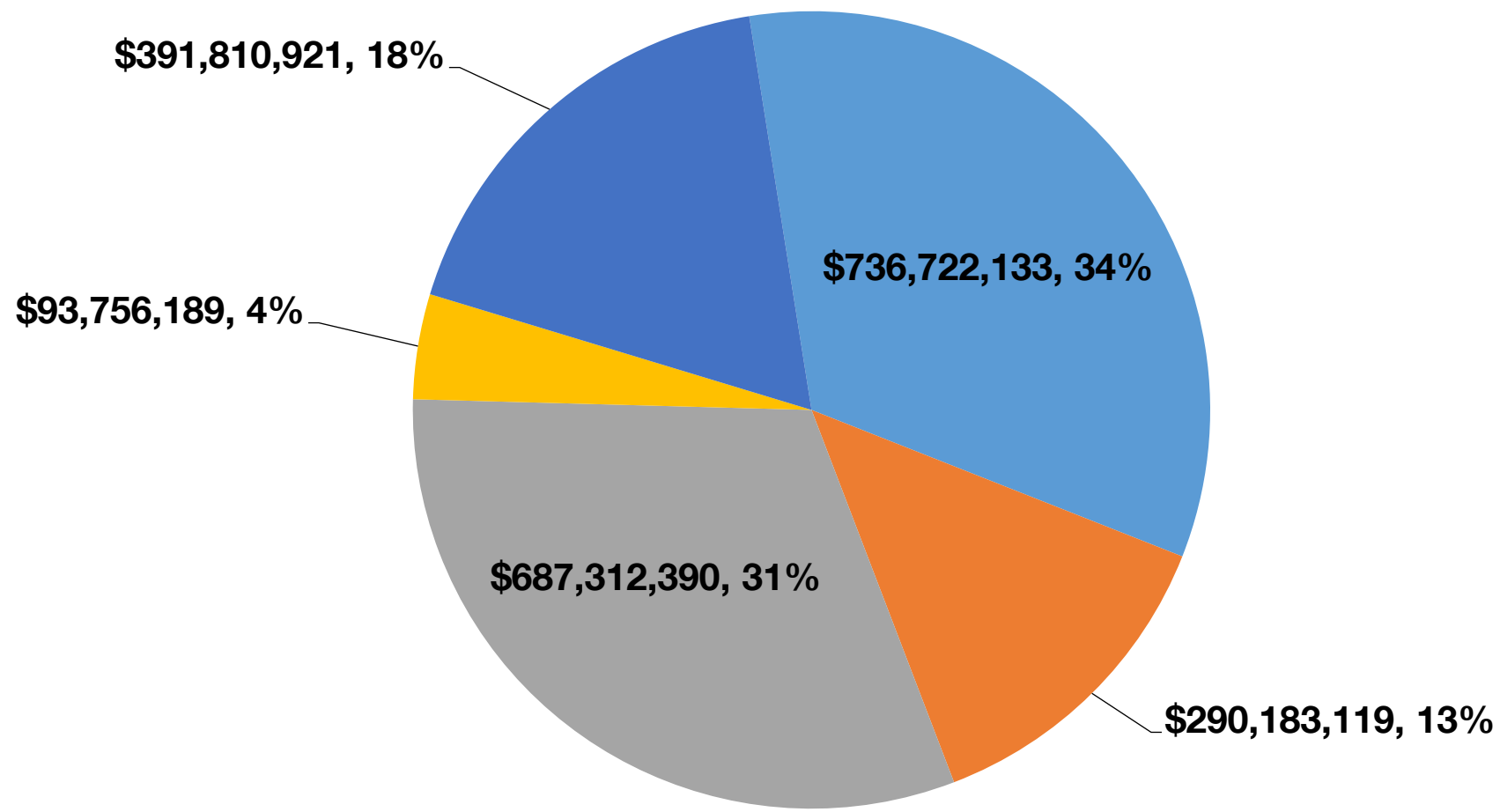
**Total = 267**

### GDOT & Local Lets

- Maintenance
- Bridges
- Roads
- Enhancements
- Safety

# Fiscal Year 2026 Letting Report

## Dollar Amount of Projects Let in FY 2026 (Contractor Low Bid Award Data)



**Total = \$2,199,784,752**

### GDOT & Local Lets

- Maintenance
- Bridges
- Roads
- Enhancement
- Safety

# April 2026 Letting Results

Summary	Presented to GDOT Board (Includes Adjustments)	Low Bid (Awarded to Contractor)	Low Bid w/Adjustments (Total Project Obligation)
GDOT Let (Project Count)	31	29	29
GDOT Let (Dollars)	\$121,767,751	\$110,984,481	\$115,315,432
Local Let (Project Count)	0	NA	NA
Local Let (Dollars)	\$0	NA	NA

\*Low Bid Award Amount includes the Deferred and Awarded projects.  
Does not include Engineering and Inspection, Utilities, Liquid AC, Incentives, LMIG and Rejected projects.

# **GDOT and Local Let Projects**

## **June 2026 Letting**

# GDOT and Local Let Projects June 2026 Letting

Project ID	Description	Primary County	Primary Work Type	Congressional District	Project Let By	Project Sponsor
0015396	BOONE STREET; MAY CREEK DRIVE & KEITH DIXON WAY @ 3 LOCS	Camden	Bicycle/Ped. Facility	001	LOC	Kingsland
0016507	I-16 @ CR 12/OLIVE BRANCH ROAD 9.1 MI NE OF PEMBROKE	Bryan	Bridges	001	DOT	GDOT
0016564	CR 31/OGLETHORPE ROAD @ LITTLE GOOSE CREEK	Wayne	Bridges	001	DOT	GDOT
0016565	CR 31/OGLETHORPE ROAD @ LITTLE GOOSE CREEK 9 MI NW OF JESUP	Wayne	Bridges	001	DOT	GDOT
0016568	CR 95/GRACE CHAPEL ROAD @ SPANISH CREEK	Charlton	Bridges	001	DOT	GDOT
M006732	SR 25/US 17 FROM MT HOPE CREEK TO S OF PONDEROSA ROAD	Bryan	Resurface & Maintenance	001	DOT	GDOT
0020739	I-16 FROM I-95/CHATHAM TO SR 67/BULLOCH	Bulloch	Widening	001, 012	DB	GDOT
0020618	SR 26 FROM SR 520 TO MARION COUNTY LINE	Chattahoochee	Resurface & Maintenance	002	DOT	GDOT
M006855	SR 3/US 19 FM HILLCREST GRANGE DRIVE/SUMTER TO SR 271/SCHLEY	Sumter	Resurface & Maintenance	002	DOT	GDOT
0020616	SR 1/US 27 FROM SR 520 TO SR 85	Muscogee	Resurface & Maintenance	002, 003	DOT	GDOT
0020617	SR 1/US 27 FROM SR 85 TO TURNBERRY LANE	Muscogee	Resurface & Maintenance	002, 003	DOT	GDOT

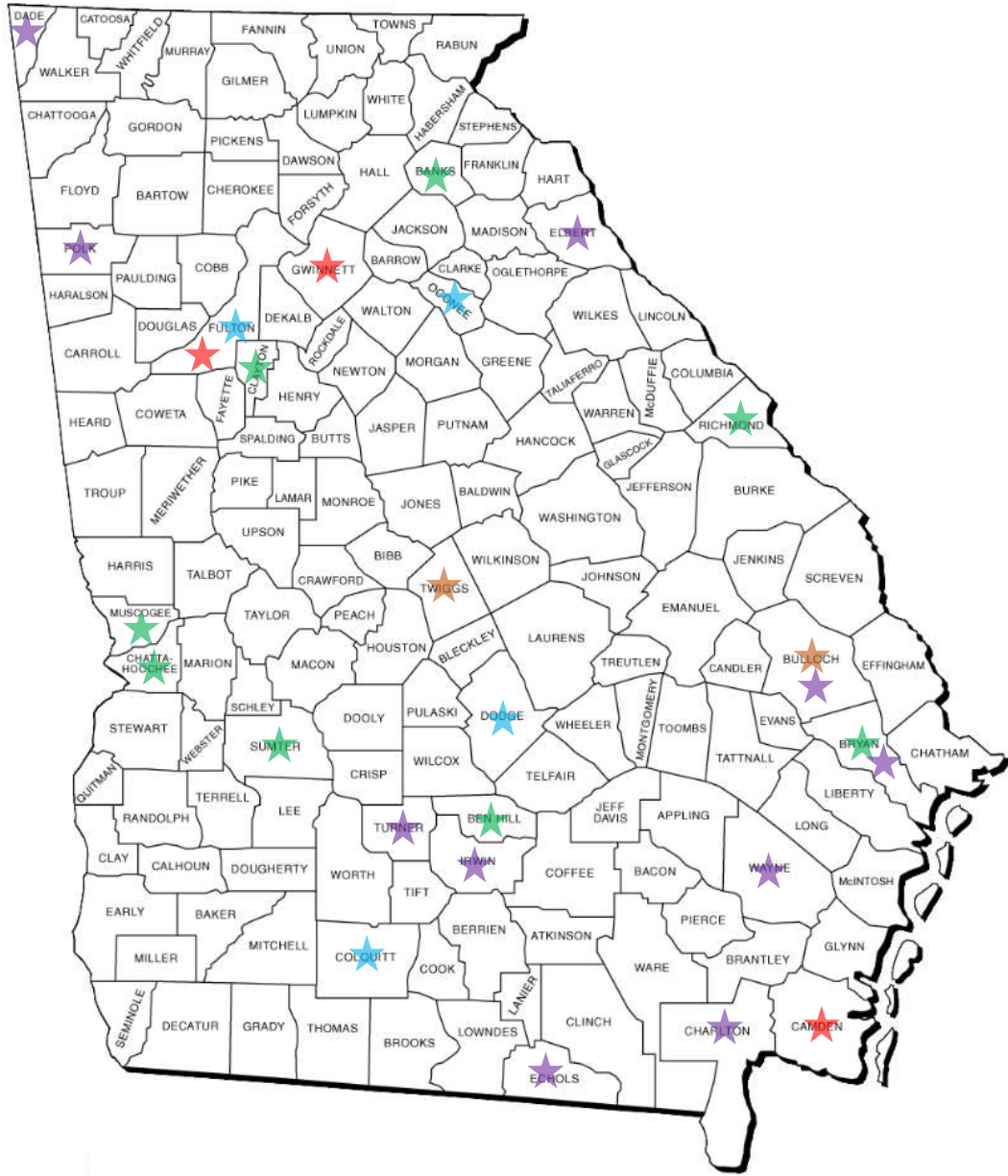
# GDOT and Local Let Projects June 2026 Letting

Project ID	Description	Primary County	Primary Work Type	Congressional District	Project Let By	Project Sponsor
0016067	NORCROSS GREENWAY - LCI	Gwinnett	Multi-use Trail	004	LOC	Norcross
M006738	I-285 @ 3 LOCS IN CLAYTON COUNTY - BRIDGE PREVENTATIVE	Clayton	Bridges	005	DOT	GDOT
0017995	SR 70 FROM CR 7549/LAKEVIEW COURT TO CR 2036/WESTPARK PLACE	Fulton	Pedestrian Facilities	006	DOT	South Fulton
0018185	SR 70 @ CR 4176/CASCADE ROAD	Fulton	Operational Improvement	006	DOT	South Fulton
0015422	CR 96/CULPEPPER ROAD @ ALAPAHOOCHEE RIVER & @ OVERFLOW	Echols	Bridges	008	DOT	GDOT
0015951	LEGG ROAD @ WOLF CREEK	Turner	Bridges	008	DOT	GDOT
0016188	PEACHTREE RD CORR FM BENJAMIN H HILL DR TO SR 107/US 319-TIA	Ben Hill	Realignment	008	DOT	Ben Hill County
0016531	CR 26/BETHEL ROAD @ HAT CREEK 6.7 MI SE OF SYCAMORE	Turner	Bridges	008	DOT	GDOT
0016588	CR 181/SATILLA ROAD @ WILLACOOCHEE RIVER OVERFLOW	Irwin	Bridges	008	DOT	GDOT
0017960	SR 37 @ CR 483/THIGPEN TRAIL	Colquitt	Roundabout	008	DOT	GDOT
322460-	SR 96 FROM E OF CR 540/OLD HAWKINSVILLE ROAD TO W OF SR 87	Twiggs	Widening	008	DOT	GDOT

## GDOT and Local Let Projects June 2026 Letting

Project ID	Description	Primary County	Primary Work Type	Congressional District	Project Let By	Project Sponsor
0020726	SIGNING & MARKING @ 51 RR LOCS IN BLECKLEY; DODGE & LAURENS	Dodge	RRX Signing & Marking	008, 012	DOT	GDOT
0020029	MARSHBURN ROAD @ WEBB CREEK	Banks	Bridges	009	DOT	GDOT
0017186	SR 53 @ CR 99/RAYS CHURCH ROAD/CR 516/MALCOLM BRIDGE ROAD	Oconee	Roundabout	010	DOT	Oconee County
0015555	SR 79 @ BROAD RIVER 15.7 MI NW OF LINCOLNTON	Elbert	Bridges	010, 012	DOT	GDOT
0016604	CR 9/AKINS POND ROAD @ MILL CREEK	Bulloch	Bridges	012	DOT	GDOT
M006799	I-520 FROM I-20 TO SR 4	Richmond	Resurface & Maintenance	012	DOT	GDOT
0015542	SR 136 @ LOOKOUT CREEK	Dade	Bridges	014	DOT	GDOT
0020028	DAVIS TOWN ROAD @ HILLS CREEK TRIBUTARY	Polk	Bridges	014	DOT	GDOT

# June 2026 Projects Throughout Georgia

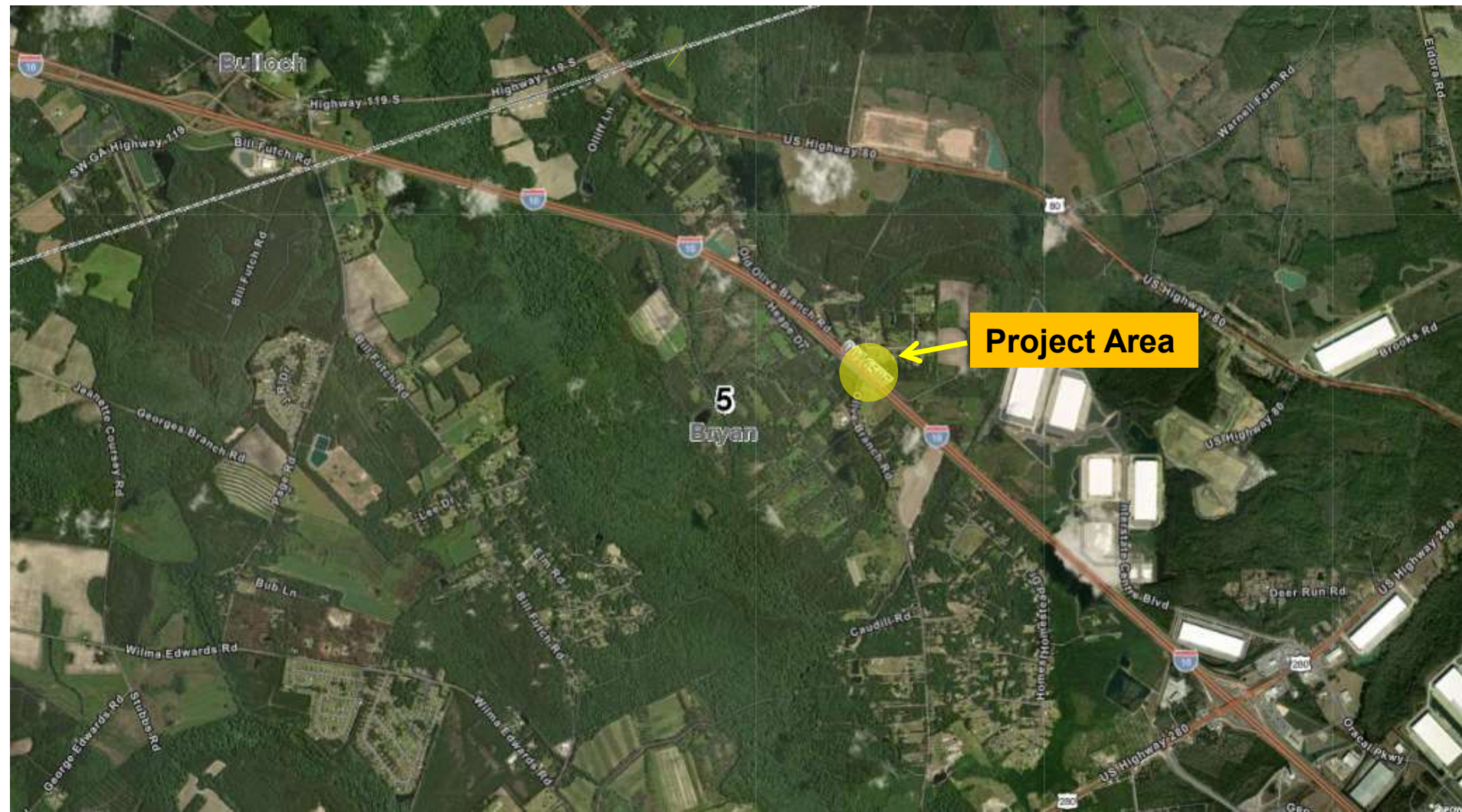


	Maintenance
	Safety
	Roads
	Bridges
	Enhancements

# I-16 @ CR 12/OLIVE BRANCH ROAD 9.1 MI NE OF PEMBROKE

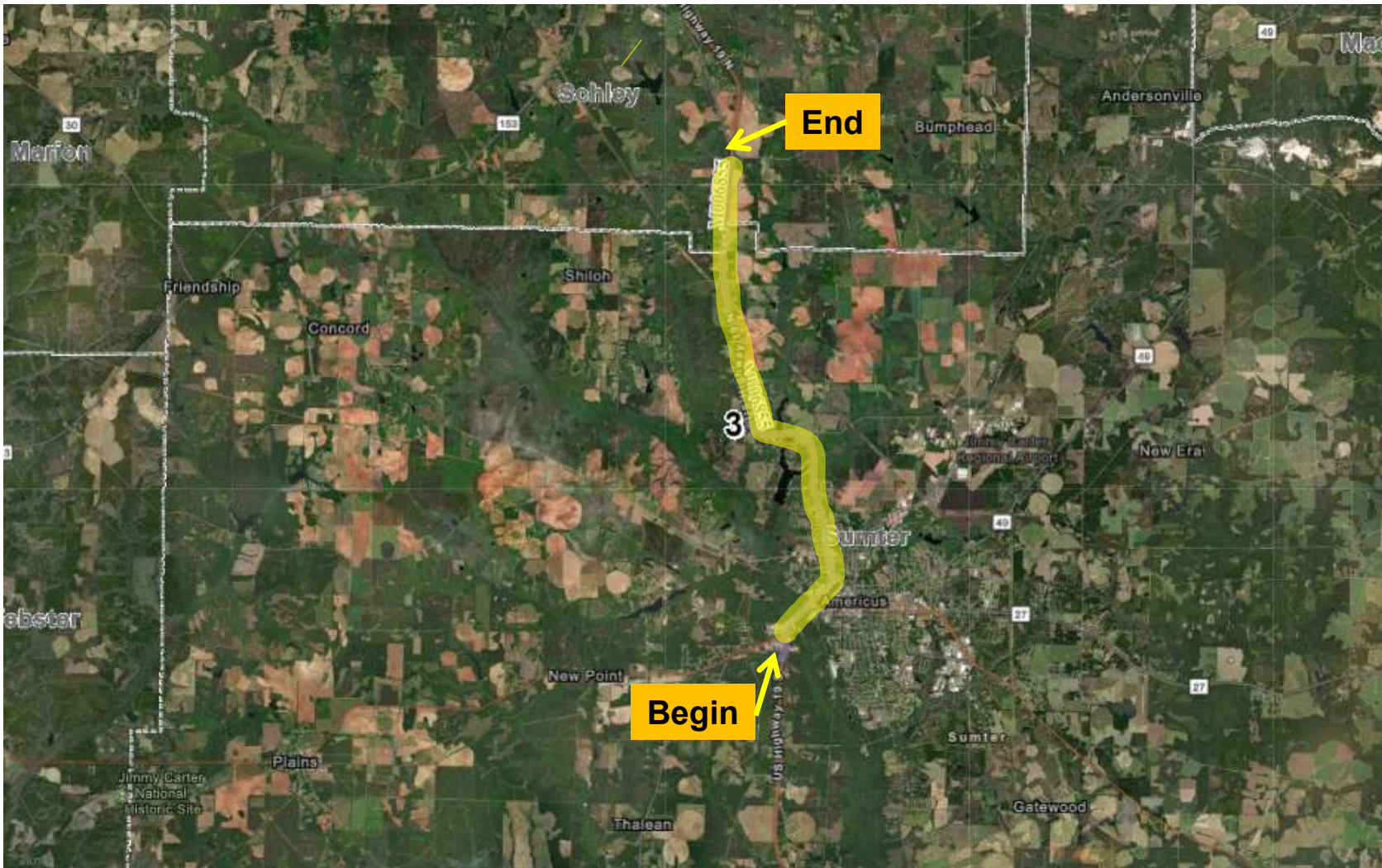
## Bridge Replacement Project in Bryan County

### Congressional District 1



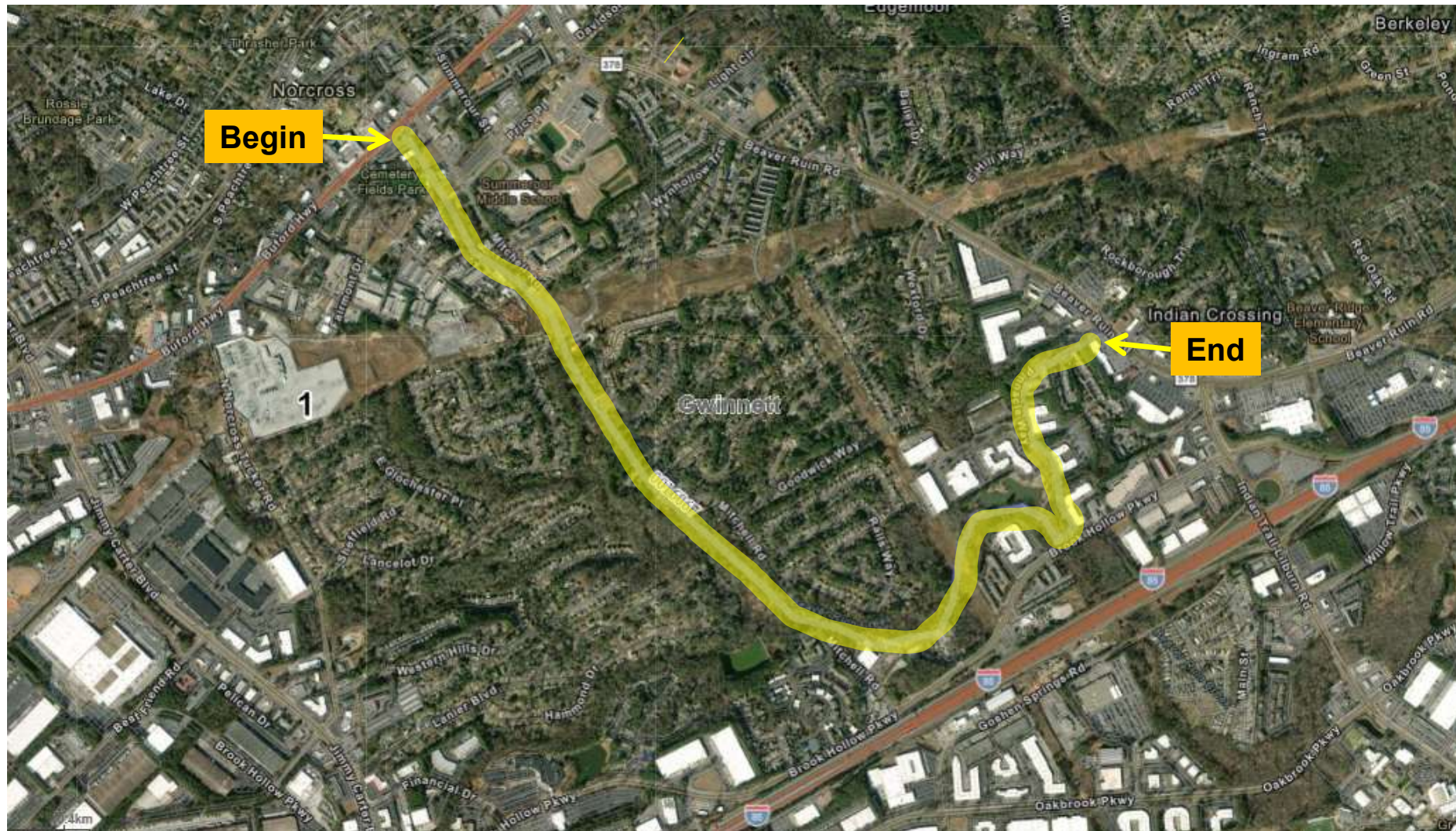
# SR 3/US 19 FM HILLCREST GRANGE DRIVE/SUMTER TO SR 271/SCHLEY

## Resurfacing Project in Sumter County Congressional District 2



# NORCROSS GREENWAY – LCI

## Multi-Use Trail Project in Gwinnett County Congressional District 4



# SR 37 @ CR 483/THIGPEN TRAIL Roundabout Project in Colquitt County Congressional District 8



# SR 96 FROM E OF CR 540/OLD HAWKINSVILLE ROAD TO W OF SR 87

## Widening Project in Houston, Twiggs County

### Congressional District 8



# SR 53 @ CR 99/RAYS CHURCH ROAD/CR 516/MALCOLM BRIDGE ROAD

## Roundabout Project in Oconee County

### Congressional District 10



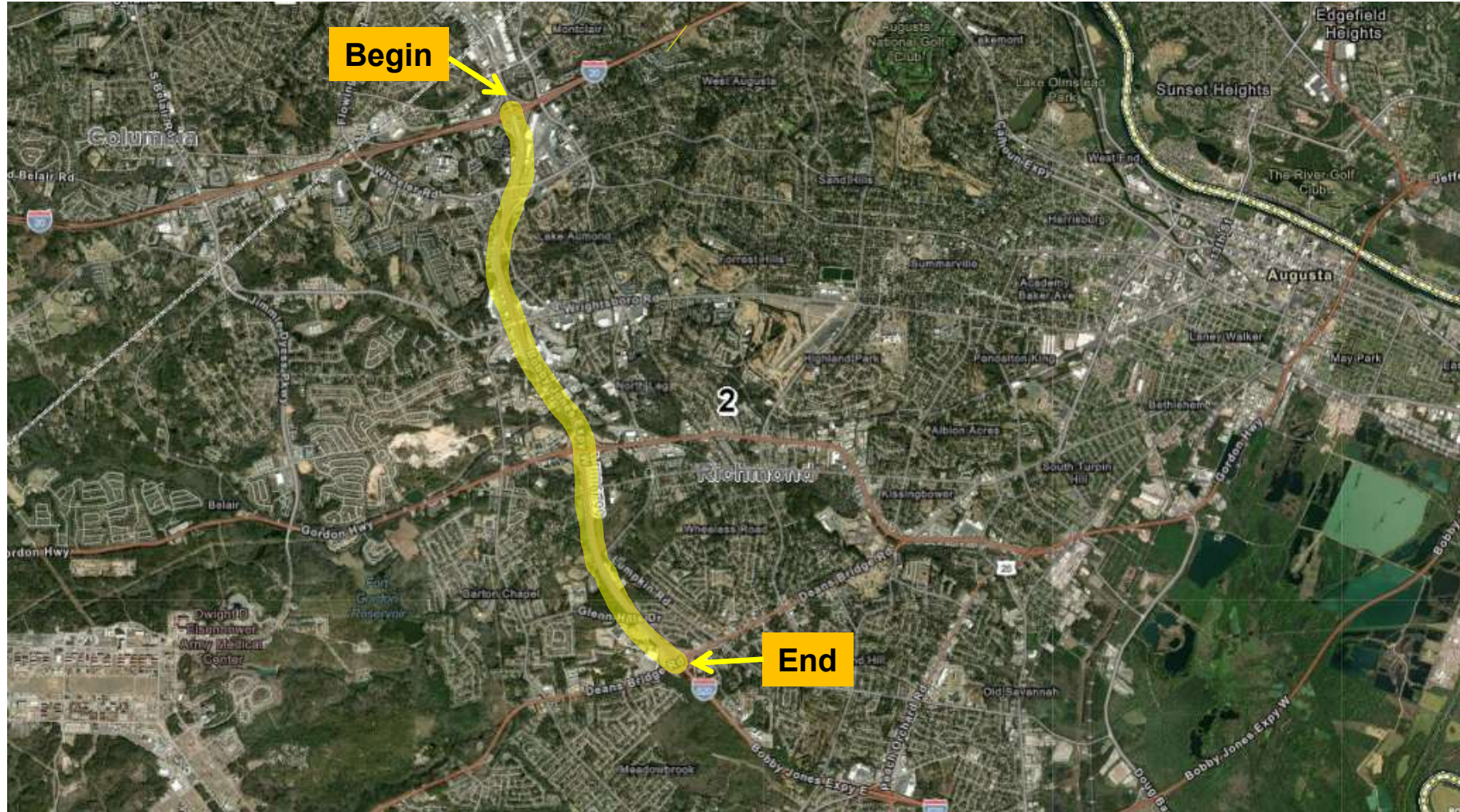
# SR 79 @ BROAD RIVER 15.7 MI NW OF LINCOLNTON

## Bridge Replacement Project in Elbert & Lincoln Counties

### Congressional District 10 & 12



# I-520 FROM I-20 TO SR 4 Resurfacing Project in Richmond County Congressional District 12



**Project Previously Presented to the Board  
for Advanced Advertisement  
In the June 2026 Letting**

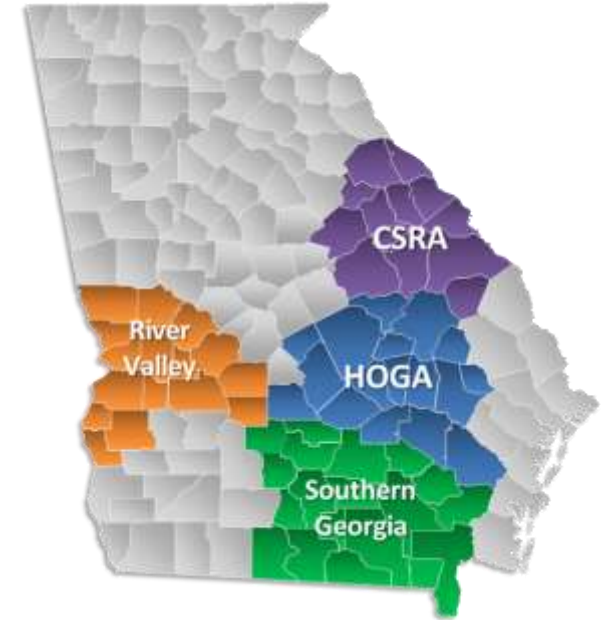
## GDOT Project Previously Presented to the Board for Advanced Advertisement In the June 2026 Letting

Project ID	Description	Primary County	Primary Work Type	Congressional District	Project Let By	Project Sponsor	Letting Presentation Date
0020739	I-16 FROM I-95/CHATHAM TO SR 67/BULLOCH	Bulloch	Widening	001, 012	DB	GDOT	October 2025



# June 2026 Letting

## Proposed TIA Project



**Kenneth Franks**  
**State TIA Administrator**  
**May 21, 2026**

# TIA Project June 2026 Letting

Project ID	Description	Primary County	Primary Work Type	Congressional District	Project Let By	TIA Region
0016188	PEACHTREE RD CORR FM BENJAMIN H HILL DR TO SR 107/US 319-TIA	Ben Hill	Realignment	8	DOT	Southern Georgia

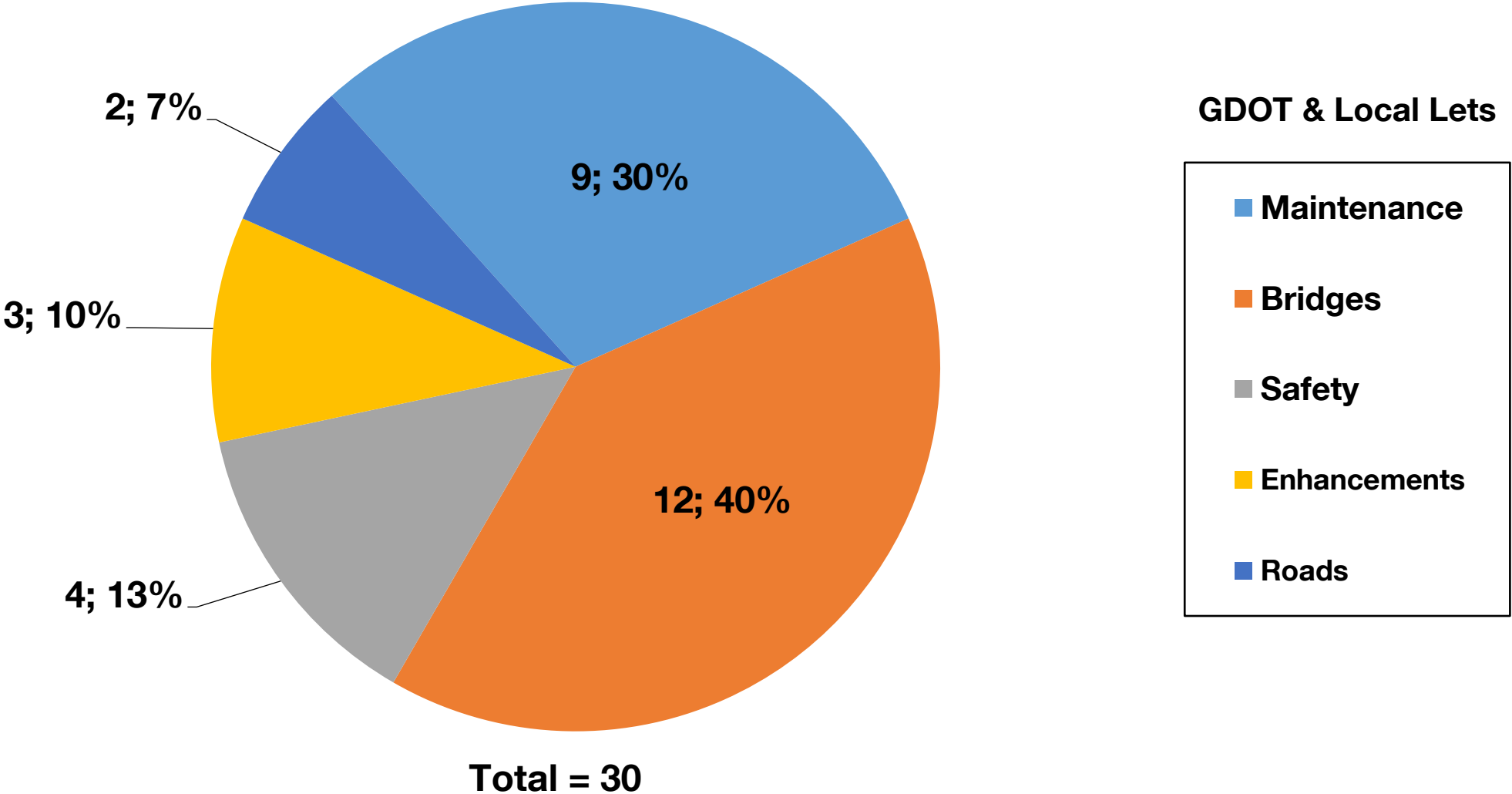
# Peachtree Road Truck Route Ben Hill County – Congressional District 8



# Fiscal Year 2026 Letting Report

## Number of Projects

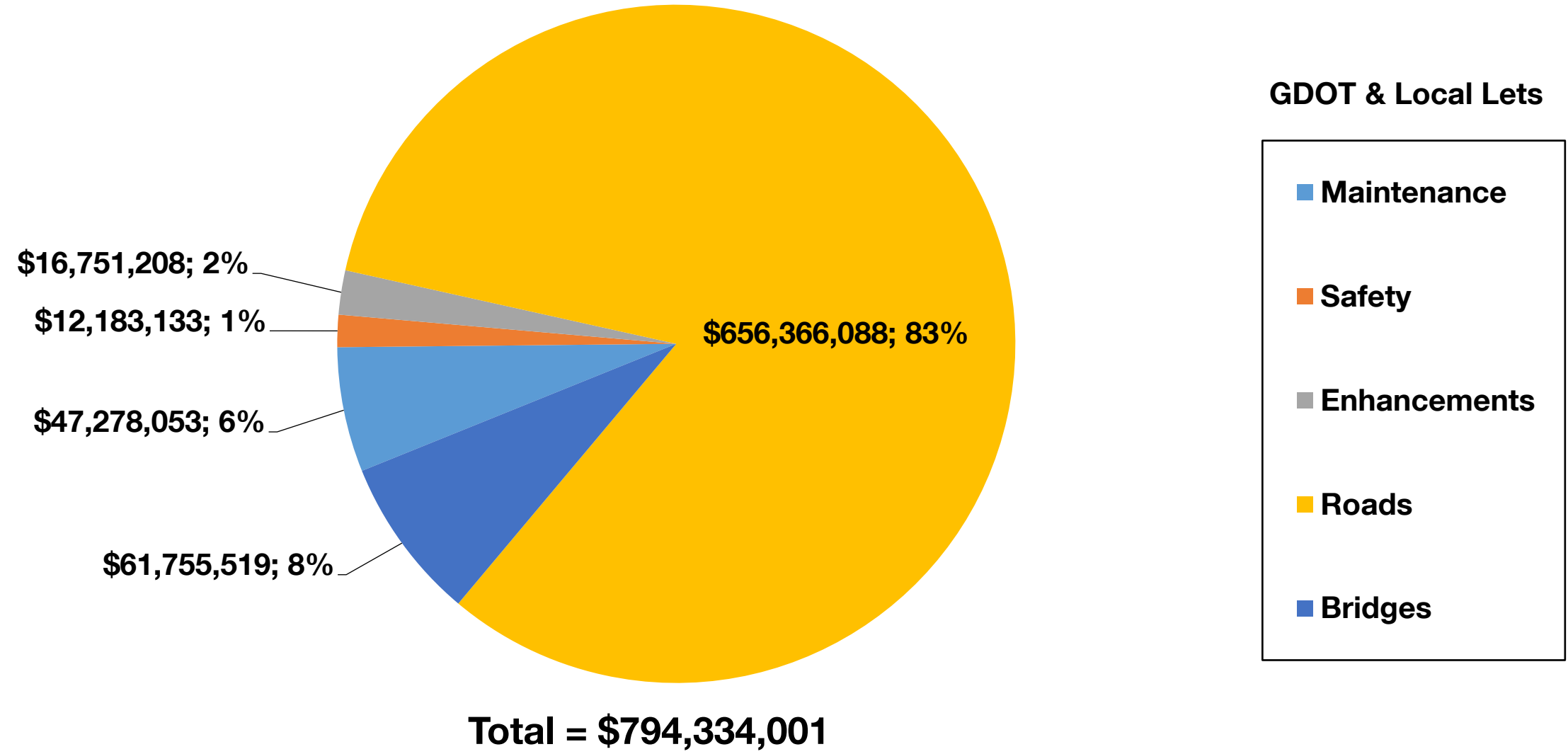
### June 2026 Letting



# Fiscal Year 2026 Letting Report

## Dollar Amount of Projects

### June 2026 Letting





# Commissioner's Report to the State Transportation Board

**Russell R. McMurry, P.E.**  
**Commissioner**  
**May 21, 2026**

# Commissioner's Update: April 2026 Data

- Transportation Fund Collections
- Employment Data
- Professional Services Procurement Update
- Highlights of Projects Open to Traffic
- Update on BUILD America 250 Act

## April 2026 Retirements

Retiree	Work Location	Years of Service
<b>Steven Scott Greenway</b>	District 1 Area 4 Construction	10
<b>Todd James Mathis</b>	District 3 PC Right of Way	13
<b>Gregory Earl Spicer</b>	OMAT Pav Testing Mgt Branch	19
<b>Theodore Joseph Brabtree</b>	Engineering Services	21
<b>Jonathan Ray Moore</b>	District 2 PC Design	24
<b>Robert Chatman, Sr.</b>	District 3 Area 1 Routine Mtc	24
<b>Jerry L. Williams</b>	District 4 Mtc Supv	26
<b>Billy Gene Cagle, Jr.</b>	District 3 Area 2 Routine Mtc AW	28
<b>Joshua L. Bryan</b>	District 6 Area 4 Routine Mtc Supv	28
<b>Larry Gene Cagle</b>	District 3 Area 2 Routine Mtc	29
<b>Barry Thomas Barnes</b>	Office of Maintenance	29
<b>Danny B. Ely</b>	OMAT Pav Test Mgt - District 2	29
<b>Keith Lamar Reeves</b>	District 2 Maint Asph Milling	32
<b>Tammy W. Hatch</b>	District 6 AD Admin Support	35

# Commissioner's Update: April 2026 Data

- Transportation Fund Collections
- Employment Data
- Professional Services Procurement Update
- Highlights of Projects Open to Traffic
- Update on BUILD America 250 Act

# Bridge Replacement – 0015100

on CR 505/Honey Creek Road over Snapping Shoals Creek in Rockdale County



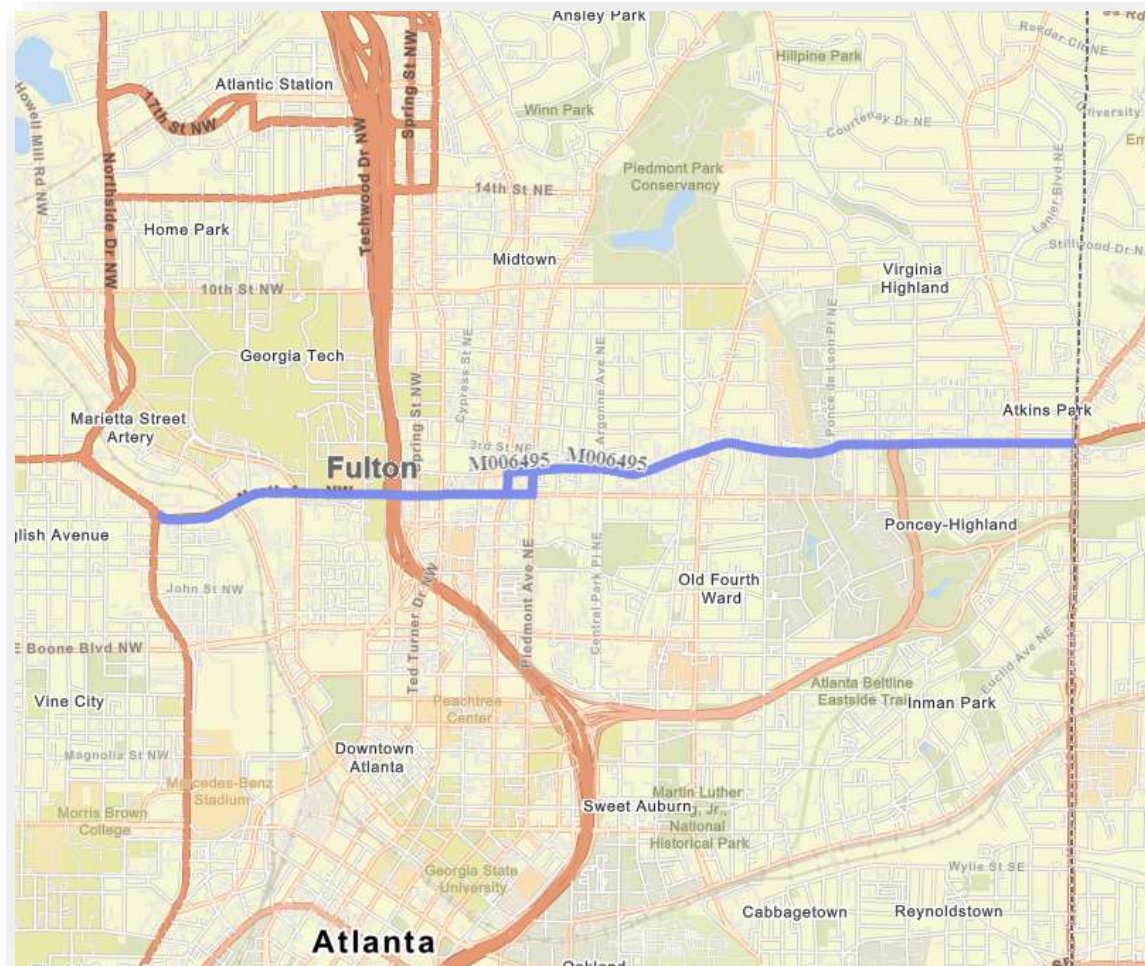
# Bridge replacement – 0015100

on CR 505/Honey Creek Road over Snapping Shoals Creek in Rockdale County



# Resurfacing – M006495

on North Avenue/SR 8 from Northside Drive/SR 3 to Moreland Avenue/SR 42 in Fulton County



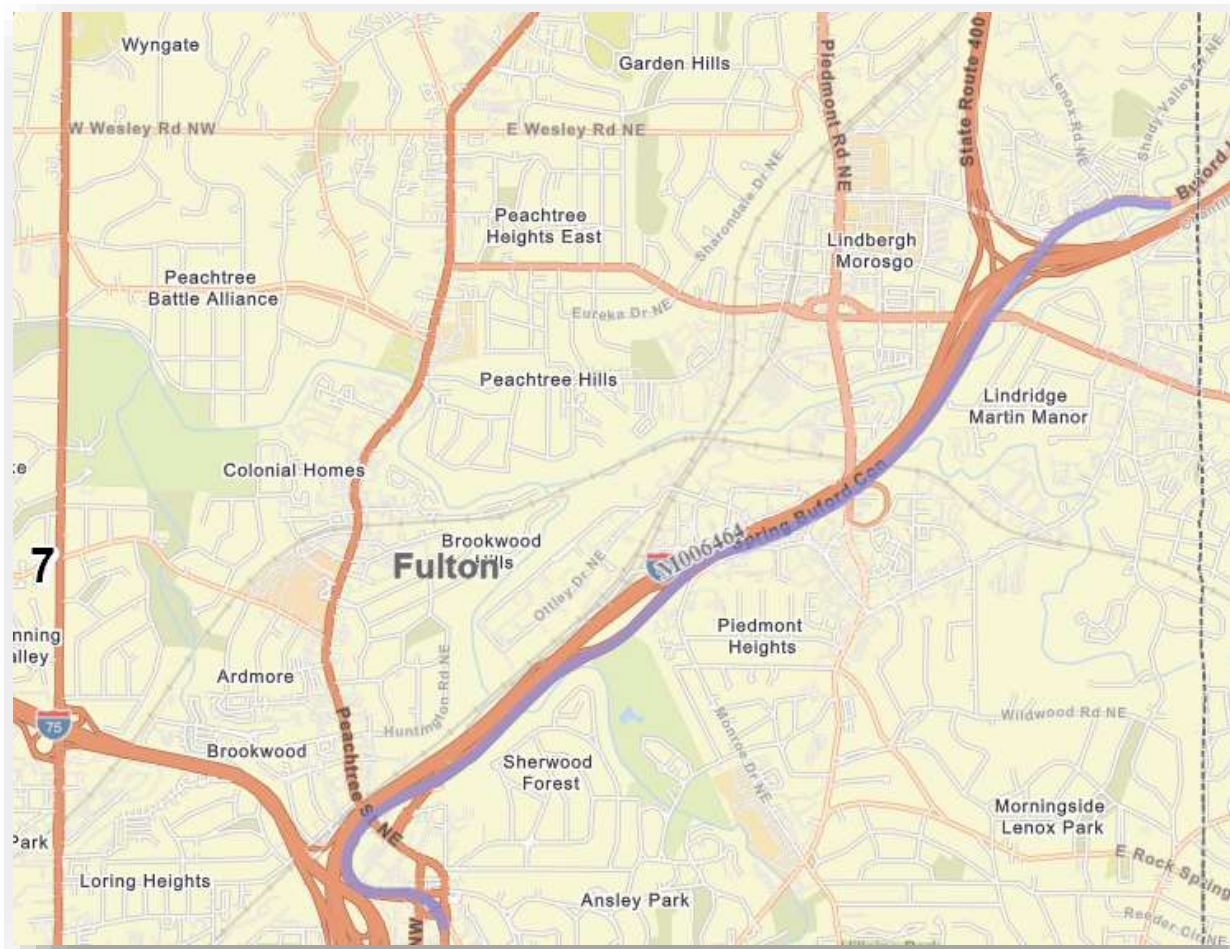
# Resurfacing – M006495

on North Avenue/SR 8 from Northside Drive/SR 3 to Moreland Avenue/SR 42 in Fulton County



# Resurfacing – M006464

on Buford Highway/SR 13 from Peachtree Street NE/SR 9 to North Fork Peachtree Creek in Fulton County



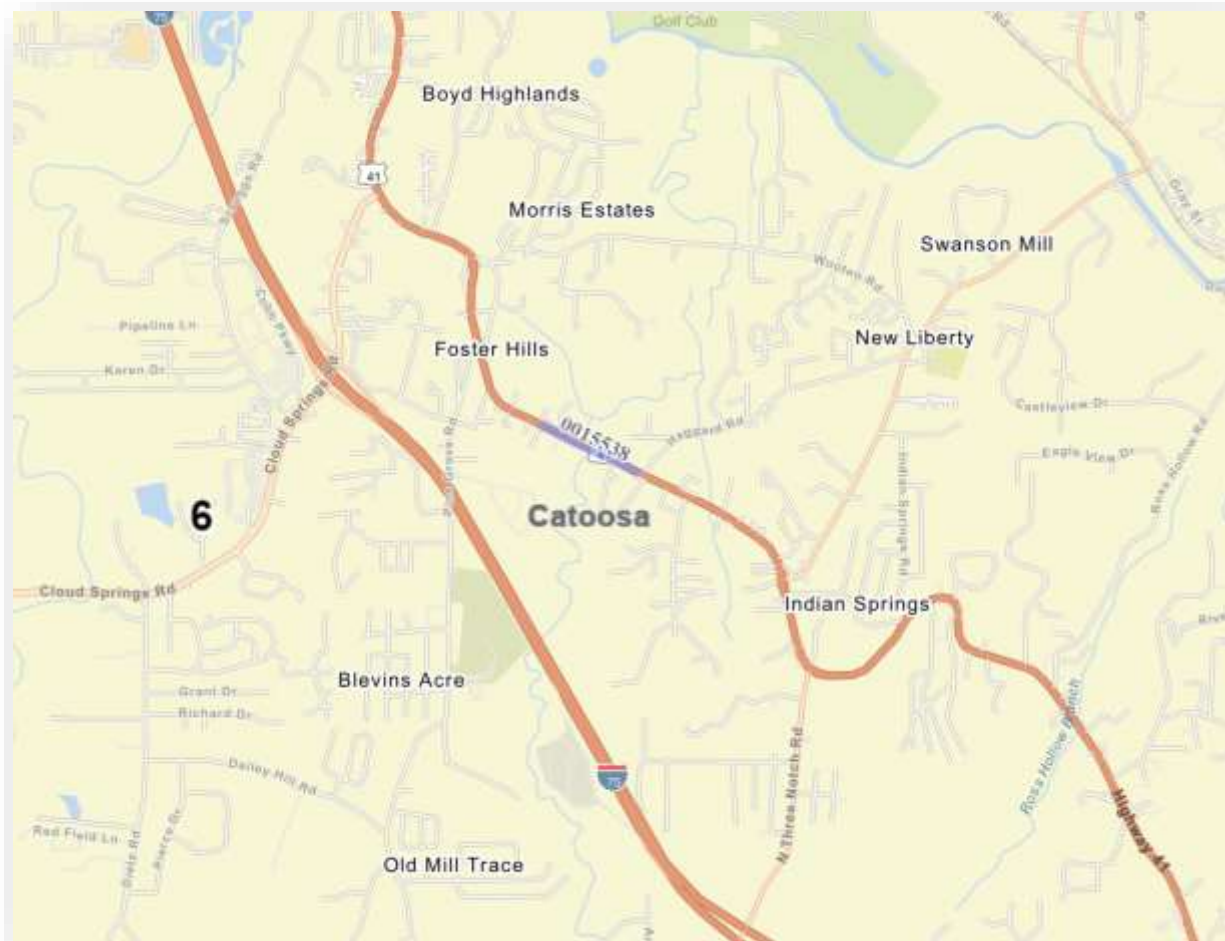
# Resurfacing – M006464

on Buford Highway/SR 13 from Peachtree Street NE/SR 9 to North Fork Peachtree Creek in Fulton County



# Bridge Replacement – 0015538

on SR 3/US 41/US 76 over Peavine Creek in Catoosa County



# Bridge Replacement – 0015538

on SR 3/US 41/US 76 over Peavine Creek in Catoosa County





# Honors, Updates, Achievements & Recognitions

# SR 400 Express Lanes Groundbreaking Ceremony



**GEORGIA**  
*Express Lanes*®  
**SR 400**

**Groundbreaking Ceremony - April 22, 2026**



# SR 400 Express Lanes Groundbreaking Ceremony



# Griffin-Spalding County Regional Airport Groundbreaking



# Georgia Mobility & Access Planner (G-MAP) Launch



**A CELEBRATION OF INNOVATION AND ACCESS**



The celebration included a ribbon cutting ceremony and keynote remarks from transportation and community leaders representing Gwinnett County, USDOT, Georgia DOT, ARC, and the Statewide Independent Living Council of Georgia.



GDOT Gwinnett



Apple



Android

# State Employees Recognition Week





# Westside Rebuild

## I-285 Original Construction

- Completed 1969
- Some segments nearing 60 years old
  - 2 Lanes
  - 10 inch Concrete Pavement
  - 6 inch Aggregate Stabilized Base
  - 6 inch Cement Stabilized Graded Aggregate Base



# I-285 Maintenance

- Service Life
  - 25 years – Slab Rehab and Grinding
  - 40 years – Reconstruction
- Extended Service Life
- Shoulder Reconstruction
  - 2005
  - Roller Compacted Concrete
- D7 Routine Maintenance
  - 2014 to Present
  - \$60 Million
  - Maintenance Projects, ITB, In House Forces



# I-285 Westside Rebuild Projects

Updating to Current AASHTO Standards

## PI 0018193 Fulton & Cobb Counties

I-285 FROM CS 843/COLLIER DRIVE TO CR 2838  
/PACES FERRY ROAD  
Congressional District 06  
7.22 miles

## PI 0018192 Fulton County

I-285 FROM CS 2971/MT GILEAD ROAD TO CS 843  
/COLLIER DRIVE  
Congressional District 05 & 06  
4.80 miles

## PI 0018191 Fulton County

I-285 FROM SR 14 TO CS 2971/MT GILEAD ROAD  
Congressional District 05 & 06  
5.30 miles



# I-285 Westside Rebuild

Traffic Impacts posted  
to project website



<https://www.dot.ga.gov/285Rebuild>

**GDOT**  
Georgia Department of Transportation

**PRESS Release**  
I-285 Westside Rebuild

Regional Impacts...

**RESCHEDULED! FULL WEEKEND-LONG CLOSURE: All I-285 Lanes (NB/SB) Closed on west side of Atlanta - Region-wide Delays Expected**

Those travelling to or through metro Atlanta during the weekend of May 15-18 should be aware, consider alternate routes, expect extreme delays

**ATLANTA** – Weather and onsite conditions permitting, contractor work crews on behalf of the Georgia Department of Transportation (GDOT) will implement a full closure of all northbound and southbound lanes of Interstate 285 (I-285) between State Route (SR) 139/Martin Luther King, Jr. Drive (exit 9) and Cascade Road (exit 7) in Fulton County. While necessary for timely completion of the ongoing construction required to rebuild this segment of I-285, this closure will have significant impacts on travel throughout the metro area.

The closure will begin 7 p.m. Friday, May 15, and remain in place until 5 a.m. Monday, May 18, weather and on-site conditions permitting.

**No traffic will be permitted through this section of I-285 at any time during the closure.**

**MAJOR REGIONAL IMPACT — PLAN AHEAD**  
This is a full interstate closure on one of metro Atlanta's most heavily traveled corridors. Motorists should expect:

- Significant, region-wide delays across metro Atlanta
- Heavy congestion on I-20, I-75/I-85, and Langford Parkway (SR 166)
- Spillover traffic on local roads throughout southwest Atlanta and Fulton County

Motorists in the metro Atlanta area this weekend should plan ahead.





LOCAL  
**'I think everybody was prepared:'  
Drivers find smooth going around  
closed I-285**



+ Caption



By **Bryan Mims, WSB-TV**

May 16, 2026 at 1:02 pm EDT



# In memory of Rodney Dwayne Pickle





## Board Action Items

- A. John Hancock Retirement Resolution
- B. Committee Reports
  - I. Program Delivery Committee
  - II. Committee of the Whole





- New Business**
- Adjourn**





# State Transportation Board Meeting

May 21, 2026